

STORM DRAIN PROTECTOR



Foam Protector & Mat



Safety Cone



Foam and Velcro Protectors



Velcro Protector with Biochar



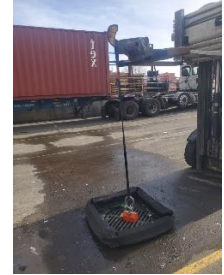
4 Aprons Under Drain Grate



Velcro Protector with Belly



Bundles Velcro & Foam



Lifting Magnet

Uses Gator Guard Storm Drain Protectors were developed to keep sediment, trash, paper pulp, oils and heavy metals out of storm drains at paved recycling yards, lumber yards, truck terminals, etc. Although they can survive some drive-overs, they can crush to lower heights and will eventually be destroyed by frequent drive-overs. Marker cones can reduce drive-over damage.

Storm Drain Protectors can also be used for sediment, trash and vegetation control on highway median and construction site storm drains. They fit standard 24 or 30-inch round or square grates.

Products Gator Guard Storm Drain Protectors come in 3 configurations for 24 and 30-inch Storm Drains. They are square but can be used with round or square storm drains.

- The FOAM version has 4x4x26 or 4x4x32-inch polyethylene foam sticks sewn into the four sides.
- The VELCRO version has a full length 5-inch diameter Velcro pocket to hold treatment media such as Biochar, Metal-Sorb, Oil Absorbent, Nutrient or Microbial treatment, etc. Treatment media is typically in mesh bags or socks placed inside the Velcro pocket.
- A “BELLY” version of the FOAM and VELCRO Drain Protectors will hold additional treatment materials under the grate for even better water treatment.
- A Drain Mat made of stiff plastic or coir with large openings may be placed inside the Drain Protector on top of the grate to catch blowing and overflow trash and leaves.

Installation After removing the grate and cleaning the opening, four interior aprons are centered over the storm drain opening. Carefully place the grate on top of the interior aprons and press the grate into place. A Mesh Drain Grate Mat made of open weave plastic or coir may be placed on top of the grate

STORM DRAIN PROTECTOR

Cleaning Sweep exterior and interior debris into a dustpan or shovel for disposal. No need to remove the storm drain protector. Brooming the fabric can help open plugged geotextile pores.

How They Work The four sides of the Foam Drain Protector contain 4-inch square polyethylene foam sticks covered with high-flow geotextile that will allow runoff water to pass through the geotextile into the storm drain. All four corners have small openings to minimize overflow and ponding under heavy runoff conditions. Velcro Drain Protectors work similarly with water passing through the treatment media. As water depth increases outside the Drain Protector, sediment, pulp and trash settle-out where they can be swept up and removed.

INSTALL TIPS If a Forklift is available, a Lifting Magnet securely chained to the forks allow easy removal and replacement of heavy grates.

NOT ON YOUR PLANS Write in Gator Guard products on your SWPPP as an equal or better BMP, sign and date. (if in-doubt, check with your engineer, contract administrator and/or agency official first)

TEST RESULTS Stormwater samples collected at a paper recycling plant in Oregon were tested for 9 priority metals and Total Suspended Solids at Columbia Laboratories in Portland OR. During testing Rain was moderate. Collection was by syringe at pre-test and collection container post-discharge. **RESULTS: All metals and TSS showed a significant reduction.**

POLLUTANT TESTED	VELCRO DRAIN PROTECTOR WITH BIOCHAR SOCK MEDIA	FOAM DRAIN PROTECTOR W/ NO TREATMENT MEDIA
	Microgram/liter Pre & Post Treatment Reduction	Microgram/liter Pre & Post Treatment Reduction
Antimony	3.3 to 1.3 = 61% Reduction	N/A
Arsenic	10.1 to 1.8 = 82% Reduction	N/A
Beryllium	0.7 to .02 = 71% Reduction	N/A
Cadmium	2.8 to 0.2 = 93% Reduction	N/A
Chromium	68 to 5.5 = 92% Reduction	N/A
Copper	150 to 15.4 = 90% Reduction	N/A
Lead	97.1 to 7.1 = 90% Reduction	N/A
Nickel	34.5 to 2.7 = 92% Reduction	N/A
Zinc	4250 to 255 = 94% Reduction	N/A
TSS	83% Reduction	N/A

STORM DRAIN PROTECTOR

SPECIFICATIONS - Storm Drain Protectors

	DRAIN PROTECTOR - VELCRO	DRAIN PROTECTOR - FOAM
Part # No Belly W/ Belly	DPV524, DPV530 DPV524B, DPV530B	DPF524, DPF530 DPF524B, DPF530B
Storm Drain Opening	24 or 30-inch round or square grate	24 or 30-inch round or square grate
Inside Dimensions 24" 30"	5-inch x 29-inch x 29-inch 5-inch x 35-inch x 35-inch	5-inch x 29-inch x 29-inch 5-inch x 35-inch x 35-inch
Outside Dimensions 24" 30"	5-inch x 39-inch x 39-inch 5-inch x 45-inch x 45-inch	5-inch x 39-inch x 39-inch 5-inch x 45-inch x 45-inch
Bundle Dimensions 24" 30"	2-inch x 15-inch x 36-inch 2-inch x 15-inch x 42-inch	12-inch x 12-inch x 32-inch 12-inch x 12-inch x 38-inch
Weight 24" 30"	1.5-pounds 1.8-pounds	3.2-pounds 4.0 pounds
Polypropylene Geotextile	Monofilament 6-oz/sy	Monofilament 6-oz/sy
Geotextile Flowrate	75-gpm per square foot	75-gpm per square foot
Geotextile UV Rating	80% after 2500 hours	80% after 2500 hours
Polyethylene Foam 24" 30"		4 sticks @ 4 x 4 x 26 inches each 4 sticks @ 4 x 4 x 32 inches each
Velcro 1-1/2 inch	Full length of sock	No Velcro
Thread	T-137 Polyester	T-137 Polyester
Expected Functional Life	5 Years	5 Years

SPECIFICATIONS - Drain Mat

	DRAIN MAT for 24-INCH DRAIN	DRAIN MAT for 30-INCH DRAIN
Part #	DM24	DM30
Storm Drain Opening	24-inch round or square grate	30-inch round or square grate
Mat Dimensions	1/4 x 27 x 27-inches	1/4 x 33 x 33-inch
Weight	2-pound	3-pounds
Mat Material	Polyethylene	Polyethylene
Mat Flowrate	145-gpm per square foot	145-gpm per square foot
Mat UV Rating	90% after 500 hours	90% after 500 hours
Expected Functional Life	5 Years	5 Years

The above properties are typical averages. All test methods are ASTM or Industry Standards.